

LASER MARKING

- > Laser marking guarantees permanent engraved information on any type of backing: metal, plastic... Furthermore, it does not require a certain quantity and the result is the same for an unique piece or for mass-produced items.

> Advantages :

- Permanent durability and quality
- High line precision
- Variable or fixed data marking
- High flexibility of texts, logos, pictures (DXF, BMP)
- Barcode marking (EAN 39, Datamatrix ECC200...)

Treated materials : Steel, stainless steel, aluminium, anodized aluminium, brass, cast iron, titanium, ceramic, coppered metals, printed circuit boards, plastics, ABS, PVC, FOM, PC

Maximum marking zone : 100 X 100 mm

> Different types of laser marking :

1- ENGRAVING

Obtained by a very high density LASER power. The material is vaporized during the treatment and a stamp is created.



2- ABLATION

On a varnished or anodized material. The upper layer is removed by LASER.



3- FOAMING

Only obtained on a synthetic material. The beam locally melts the material causing micro gas bubbles that create a relief pattern when they cool down.



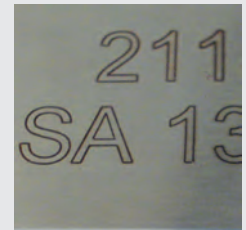
4- DISCOLORATION

Especially obtained on synthetic materials. The LASER beam changes concentrations or destroys some molecules in their structure, coloured pigments for example...



5- QUENCHING

Obtained on some steels and titanium. The material is heated under the LASER until its melting point, then very thin oxide layers are formed on the surface and create annealing colours.



> Applications :

- Medical sector
- Communication object
- Industrial plastic parts
- Industrial mechanic parts
- Labels with barcode and serial number

etiluxsystems

Labelling solutions & barcodes



Rue de l'Espérance 42 | 4000 LIEGE | Tél. +32 (0)4/224 99 99 | Fax. +32 (0)4/226 11 06 | E-mail : info@etilux.be | www.etilux.com
Milcampsiaan 237 | 1030 BRUSSEL | Tél. +32 (0)2/736 80 10 | Fax. +32 (0)2/736 46 34 | E-mail : info@etilux.be | www.etilux.com
Rue de la Platinerie 8 | 8552 Oberpallen - LUX. | Tél. +352/266 243-1 | Fax. +352/266 243-43 | E-mail : info@etilux.lu | www.etilux.lu