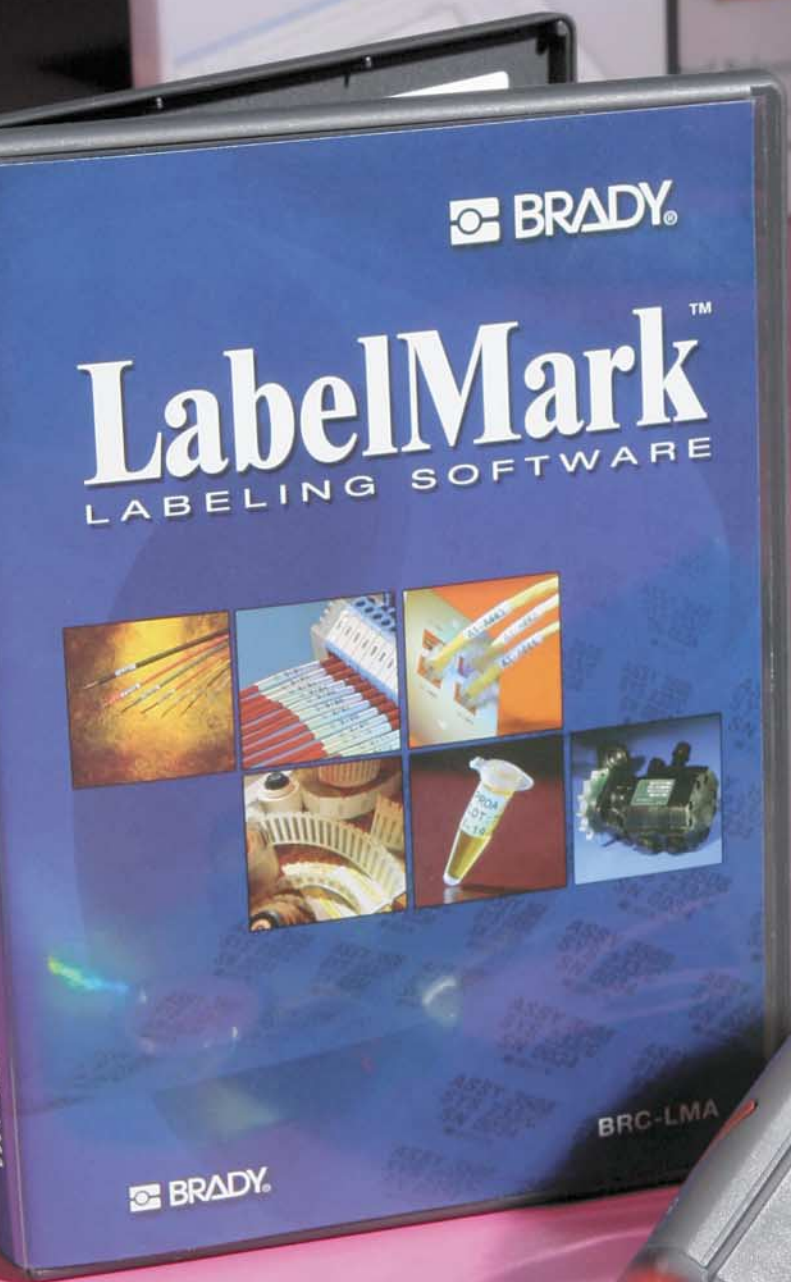


Software, Services and Data Collection



Selecting Your Labeling / Identification Software	200
BradySoft™ 8 Label Design Software	202
MarkWare™ Facility Identification Software	204
ChemLabel™ Hazardous Material Labeling Software	205
LabelMark™ V3 Labeling Software	206
IdentiLab™ Laboratory Labeling Software	208
Surf on Signs™ Signs and Labels Database Software	209
Lockout PRO™ Graphical Procedure Writing Software	210
Lockout PRO™ Enterprise	211
Selecting Your Tracking Software	212
FacilityManager	214
MEDI-MIZER™	214
Fireproof™ XT	214
Inspection Manager FLX	214
Asset Track	215
Inventory Track	215
Tool Track	215
NetDoc™ Network Documentation and Cable Management Software	216
Selecting Your Tracking / Automation Hardware	218
Bar Code Laser (BCL)	219
Powerscan™	219
Code Reader 1.0	219
Code Reader 2.0	220



Selecting Your Labeling / Identification Software

 <p>Bradysoft™</p> <p>Bar code technology has been behind the scenes in industries like Automotive and Manufacturing for decades, and Bradysoft bar code labeling and integration software has been leading the way with a full complement of advanced features that offer an enhanced level of data connectivity, security and interoperability. Best used for bar coding, rating plate, complex and graphic intensive labeling.</p> <p style="text-align: center;">Page 202</p>	 <p>MarkWare™</p> <p>MarkWare is a powerful and versatile software for facility identification. Meet all of your requirements easily using the built-in library of 800+ symbols and pictograms, 2000 chemical database for RTK labels, built-in templates and much more. Easily create your important messages in a clearly understood manner. Depending on your Brady printer MarkWare can deliver single, multiple color, and die-cut output.</p> <p style="text-align: center;">Page 204</p>	 <p>LabelMark™</p> <p>This versatile label design software is written specifically for identification applications in the telecomm, electrical and general industrial markets. LabelMark V3 is the logical solution for label design, editing and printing.</p> <p style="text-align: center;">Page 206</p>
--	--	--

GENERAL	Bradysoft™	MarkWare™	LabelMark™
Versions Available	3	1	2
Site License			X
Network Versions	X	X	
Pre-programmed Formats	Die-cut, Continuous, Tags	Pre-printed Sheet-fed Blanks, Cont.	Die-cut, Continuous, Tags
Pre-programmed ANSI/OSHA/GENERAL Facility ID Templates		X	
Right-To-Know Templates		X	
Advanced Security (User Manager)	Enterprise only		
Basic Security (Password Protect)	X	X	
Multiple Label Display			X
Application Specific Template Wizard		X	
Multi-Language Capability	21	11	7
Simple Fixed Line Entry Mode			X
Wiremarker Mode			X
Multiple Print Zones			
COMMON APPLICATIONS	Bradysoft™	MarkWare™	LabelMark™
Rating Plate Creation	X		
Wire Marking			X
Component Labeling			X
Asset ID	X		X
Terminal Block ID			X
Patch Panel ID			X
Face Plate ID			X
Industrial Labeling	X	X	
Bin Shelf Labeling	X	X	X
Facility Identification (Signs, PipeMarkers)		X	
Tag Creation		X	
Hazardous Communications (Right to Know, WHIMS)		X	
Energy Source Labeling		X	
Lockout Procedures			
Work In Process Labeling	X		
Product Appeal Labeling	X	X	
General Bar Code Labeling	X		X
Slide and Vial Identification			
Compliance Labeling	X		
Shipping Applications	X		
Logistics	X	X	X
PRINTERS AND PRINTING	Bradysoft™	MarkWare™	LabelMark™
Internal Thermal Printer Support (650+ Printers)	X		
Output Capability	Color, Grayscale	Color, Grayscale	Black/White
Batch Printing	Enterprise only	X	
Terminal Block Printing			X
Two-sided sleeve printing			X
110 Block Printing Templates			X
TLS 2200® Periphial Printing (page 16)			X
Standard Windows® Print Drivers	X		X
GlobalMark™ Periphial Printing (page 75)		X	
PowerMark® Periphial Printing		X	
HandiMark® Periphial Printing (page 50)		X	
Labelizer® Plus / VersaPrinter™		X	
LABXPRT™ Periphial Printing			
TLS PC Link™ Periphial Printing (page 16)	X		X

BradySoft™ 8 Label Design Software



Advanced labeling made simple.

With BradySoft 8 Label Design Software, you can create labels that help your organization manage assets and resources, control distribution channels and stock levels, track documents, or manage data records – all with one powerful labeling program.

Create fast labels for safety, tracking, brand identification, and more. Increase safety and ensure code compliance with rating plates, Arc Flash labels, and other safety labels. With the BradySoft 8 bar coding features, you'll be able to track inventory, data or lab samples. You'll also be able to create name plates, push button labels, and more for your entire organization.

▶ THE TOOLS YOU NEED, WHERE YOU NEED THEM

- 1 Enhance Objects**
Sharpen text or create chemical formulas
- 2 OLE DB/ODBC Connectivity**
Access all database formats (Access, Oracle, SQL Server); multiple database connections allowed
- 3 Data Source**
Share fields between labels; use formulas for standardized labels
- 4 Bar Codes**
Linear bar code symbologies and 2D bar coding capability
- 5 Drop & Drag**
Easily select objects and place into label space
- 6 Document Browser**
Lists every object for quick access
- 7 Easy-to-Use Tools**
Manage security, print and connect serial devices

▶ DESIGN TOOLS FOR FAST LABEL DESIGN

No special training required with these intuitive, easy-to-use features:

- ▶ Define colors and patterns for text and image objects
- ▶ Create or add Rich Text File (RTF) objects
- ▶ Organize data from external data sources
- ▶ Import data from multiple database connections
- ▶ Switch from TrueType fonts to printer resident fonts
- ▶ Change printer default margins for trouble-free printing

▶ DON'T RETYPE – IMPORT FOR FASTER, MORE ACCURATE LABELS

Easily import information from spreadsheets and data tables right onto your labels with fewer errors.

- ▶ Database Connection Wizard
- ▶ Label Design Wizard that's intuitive and easy-to-use
- ▶ Database tables can be easily created, modified, or deleted

- ▶ Custom Query Designer for selective record printing
- ▶ Database Manager Tool lets you print directly from the database
- ▶ Label preview

▶ NO-HASSLE, AUTOMATED LABEL PRINTING

BradySoft 8 Label Design Software makes label printing faster and easier with these flexible options:

- ▶ Analyze labels to locate elements that are not print optimized
- ▶ Create and print faster with business-specific print formulas
- ▶ Streamline the process with control variables for batch printing
- ▶ Simplify printing with five different print dialog options
- ▶ Customize parameters for exporting data
- ▶ Print directly from "Find Record" results
- ▶ Encode complicated labels for trouble-free printing

BradySoft™ 8 Label Design Software

BradySoft 8 Version Features	STANDARD	ULTIMATE RFID	NETWORK VERSIONS (3, 5, 10, 25, 50)
GENERAL			
Manage multiple users			•
Print only version		•	•
UNICODE	•	•	•
Printer code converter	•	•	•
Multi-level undo	-40	-40	-40
Auto Save document	•	•	•
Password (one level)	•	•	•
Hidden (unprintable) objects	•	•	•
Graphic formats import		•	•
Color support		•	•
Color graphic reduction	•	•	•
Graphic bar codes	ALL	ALL	ALL
Native printer bar codes	•	•	•
Circular bar codes		•	•
TextArt	•	•	•
Rich Text Fields (RTF)		•	•
Listfield		•	•
Object positioning	•	•	•
Command line options		•	•
Label preview		•	•
Multi-Level password protection		•	•
Full justify	•	•	•
Preview graphics/labels	•	•	•
Multilingual support	•	•	•
Export label as a graphic		•	•
Import from FTP		•	•
Word hyphenation option		•	•
Long file names		•	•
TCP/IP Printing	•	•	•
OLE objects	•	•	•
Fit to frame option		•	•
Grid view/print		•	•
RF Tag management		•	•
Lock/Unlock objects		•	•

► **SERVER REQUIREMENTS**

Hardware Requirements

- IBM compatible PC (486 or higher)
- 64 MB RAM for Windows® 2000 or Windows® XP users (128 MB recommended)
- 256 MB RAM for Windows® Server 2003 users (512 MB recommended)
- SVGA monitor or better
- Hard Drive with 150 MB free space or greater
- CD ROM drive

Operating System and System Files:

- Microsoft® Windows® 2000, Windows® XP or Windows® Server 2003
- Microsoft® Data Access Components 2.8 (MDAC) or greater
- Microsoft® .Net Framework 1.1

Application Requirements

- Microsoft® Internet Explorer 6.0 or greater
- Adobe Acrobat Reader 6.0 or greater

► **BRADYSOFT 8 ULTIMATE RFID**

Description	Part Number
BradySoft 8 Ultimate RFID	BS80ULTM

BradySoft Ultimate offers the most text editing and bar code features, and incorporates security features. This is the best choice for advanced database importation and integration with third-party programs.

► **BRADYSOFT 8 STANDARD**

Description	Part Number
BradySoft 8 Standard	BS80STD

BradySoft Standard gives you the tools you need to design and print labels with ease, including text, bar codes, graphics, and fixed or variable data, using user-defined or database-driven information.

► **BRADYSOFT 8 RUNTIME**

Description	Part Number
BradySoft 8 RunTime	BS80RUNS

BradySoft RunTime is a print-only version that allows users to quickly and easily print labels, but not manipulate them.

► **BRADYSOFT 8 NETWORK**

Description	Part Number
BradySoft 8 Network 3	BS80N03S

BradySoft Network gives you all the features of BradySoft Standard, but in a networked configuration. Available in versions for 5 to 50 users.

► **COMPATIBLE BRADY SYSTEMS WITH BRADYSOFT™ 8 LABEL DESIGN SOFTWARE**



MVP Series



Wraptor™



1244/1344 Series



TLS PC Link™ Thermal Labeling System



X-Plus Series



PAM 3000



Tagus Series

MarkWare™ Facility Identification Software

MARKWARE FACILITY IDENTIFICATION SOFTWARE SOFTWARE, SERVICES AND DATA COLLECTION



Part Number	Description
20700	MarkWare Software Kit
20711	Software and Laminating Kit

INDUSTRIAL SAFETY SYMBOLS LIBRARY

MarkWare's built-in library gives you ready access to over 1000!! high-quality, scalable safety symbols and industrial pictograms



COMPATIBLE BRADY SYSTEMS WITH MARKWARE™ FACILITY ID SOFTWARE



**Machines no longer available.*

MarkWare Software covers all your safety and facility identification needs in one powerful package.

- ▶ Use your PC to quickly design professional looking signs and labels
- ▶ Print directly to a Brady labeling system or most Windows® inkjet/laser printers
- ▶ Use preformatted templates provided for quick and easy label creation
- ▶ Or freely customize label layouts to your own specifications
- ▶ **2,000 chemical database** for creating OSHA Right-to-Know labels
- ▶ Import logos, photos and other graphics in **9** different file formats
- ▶ Create bar codes using **15** different symbologies
- ▶ Complete drawing toolkit (hot shapes, fill patterns, freeform lines, etc.)
- ▶ Link label contents to information stored in spreadsheets and databases
- ▶ Use any font on your PC (special pipemarkers font also included)
- ▶ User interface can be displayed in 12 languages, including Spanish

MARKWARE SYSTEM REQUIREMENTS

- ▶ PC running Windows® 98 SE, NT 4.0 SP6, 2000 or XP
- ▶ 486 DX / 33 MHz or better processor
- ▶ 32 MB RAM (128 MB recommended)
- ▶ 90 MB available hard disk space
- ▶ 256-color, 640 x 480 pixel or better display
- ▶ CD-ROM drive (for installing software)

PREFORMATTED SIGN AND LABEL TEMPLATES

MarkWare software provides templates for a broad range of industrial sign and label applications, including OSHA/ANSI safety signs, equipment labels, maintenance and quality control tags, pipemarkers, asset ID labels, DOT shipping placards, RTK chemical labels, and more!

1. Pick a template
2. Type in the legend
3. Select a sign header
4. You are ready to print



RIGHT-TO-KNOW CHEMICAL LABELING APPLICATION

MarkWare software contains a database covering 2,000 commonly used chemicals as a reference for creating OSHA RTK-compliant labels

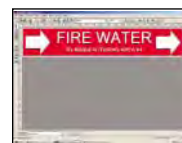
1. Select a chemical
2. Review label information
3. Insert into NFPA format
4. Or Brady color bar format



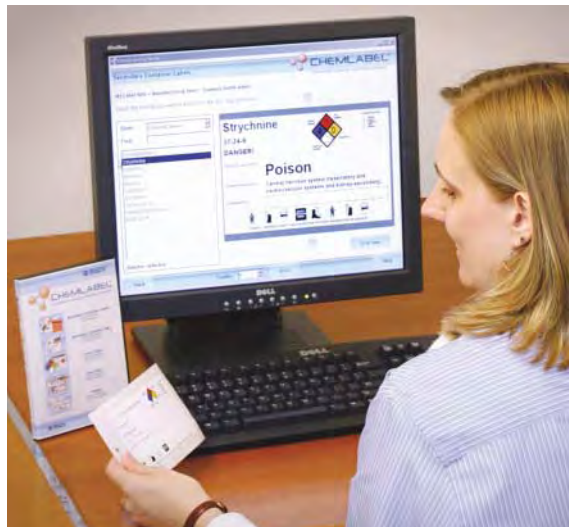
RIGHT-TO-KNOW CHEMICAL LABELING APPLICATION

Pipe marker application makes creating ANSI/ASME-compliant pipe markers a snap

1. Select type of pipe marker
2. Select size and format
3. Enter text and arrows
4. Pipe marker is done



ChemLabel™ Hazardous Material Labeling Software



Brady's ChemLabel™ Software helps keep employees safe by ensuring properly labeled chemicals.

Poorly and inaccurately labeled chemicals and other dangerous materials represent potentially serious safety problems. Brady's new ChemLabel Hazardous Material Labeling Software will make it easy to create and print labels for hazardous substances.

Use anywhere chemicals are labeled!

ChemLabel Hazardous Material Labeling Software is an extremely useful tool for factories, hospitals, laboratories, or anywhere chemicals and other hazardous materials are used and stored.

▶ FEATURES

- ▶ On-screen wizards to guide you through the process of linking data from a chemical database to a label layout, ensuring that the chemical labels you need contain the right information
- ▶ The option to use the Genium Companion Database, containing over 2,000 commonly used chemicals, or your own chemical database
- ▶ A complete stock of pre-designed templates and a full range of editing/drawing tools, making it easy to print chemical labels in the exact layout desired
- ▶ A connection to Brady industrial printers and supplies, ensuring accuracy and durability
- ▶ An extensive online help system providing detailed information and instructions
- ▶ Patent No. 5823689

▶ SYSTEM REQUIREMENTS

- ▶ Pentium® processor
- ▶ Windows® 98 with Internet Explorer 5.01
- ▶ Windows® 2000 with Service Pack 6a
- ▶ Windows® XP
- ▶ 64 MB RAM
- ▶ 175 MB available hard disk space
- ▶ 16-bit or greater video card
- ▶ 800 x 600 pixel or better display
- ▶ CD-ROM drive (for installing software)

Part Number	Description
50987	ChemLabel Software



▶ COMPATIBLE BRADY SYSTEMS WITH CHEMLABEL™ HAZARDOUS MATERIAL LABELING SOFTWARE



GlobalMark™
Industrial Label Maker



PowerMark®
Sign and Label Maker



HandiMark®
Portable Label Maker



Labelizer® PLUS*
Industrial Labeling System



Versa Printer™*
Label and Sign Maker

*Machines no longer available.

LabelMark™ V3 Labeling Software

LABELMARK V3 LABELING SOFTWARE SOFTWARE, SERVICES AND DATA COLLECTION



Part Number	Description
LM3	Full Version CD-ROM
LM3-UP	Upgrade Version CD-ROM
LM3-SITE	Site license

COMPATIBLE BRADY SYSTEMS WITH LABELMARK™ V3 LABELING SOFTWARE



MVP Series



Wraprotor™



1244/1344 Series



TLS PC Link™
Thermal Labeling System



X-Plus Series



PAM 3000



TLS 2200®
Thermal Labeling System



Tagus Series



NetDoc™
Network Documentation
and Cable Management
Software

Easy, efficient, cost-effective labeling!

This versatile label design software is written specifically for identification applications in the telecomm, electrical, laboratory and general industrial markets. LabelMark V3 is the logical solution for label design, editing and printing.

LabelMark V3 is **two** programs in one package, *LabelMark* is the standard application for "fixed-line" text-only labels, while *LabelMark Plus* includes all *LabelMark* features, as well as allowing you to add graphic images, bar codes, rectangles and lines anywhere on your labels.

STANDARD LABELMARK FEATURES

- ▶ Multi-label view for true WYSIWYG representation of label formats
- ▶ Simple text entry, formatting and editing
- ▶ Versatile serialization creation from simple to advanced
- ▶ Automatic legend repeat for quick wire marker label creation
- ▶ Data Import support including ASCII, ODBC and OLE DB
- ▶ Accommodates all Brady stock and custom formats
- ▶ Supports most WINDOWS® printer drivers and is compatible with Brady's TLS2200®, TLS PC Link™ portable printers and Wraprotor™ wire ID printer applicator
- ▶ Includes an image library of common electrical, datacomm and safety symbols
- ▶ Several common bar code symbologies available

NEW LABELMARK V3 FEATURES

- ▶ A date/time feature for easy insertion of date and/or time fields into the labels
- ▶ Improved and simplified serialization feature with a wizard that guides users through advanced serialization
- ▶ Simplified data importing for spreadsheets and ASCII text files. A wizard guides the user through the data import functions
- ▶ New label formatting and editing features for easier label creation
- ▶ Easy creation and editing of label templates
- ▶ Redesigned toolbars and menus for easy access to all program features
- ▶ Find and Replace feature for easy search and replacement of text in label files
- ▶ Pre-installed common industrial symbols and label part templates

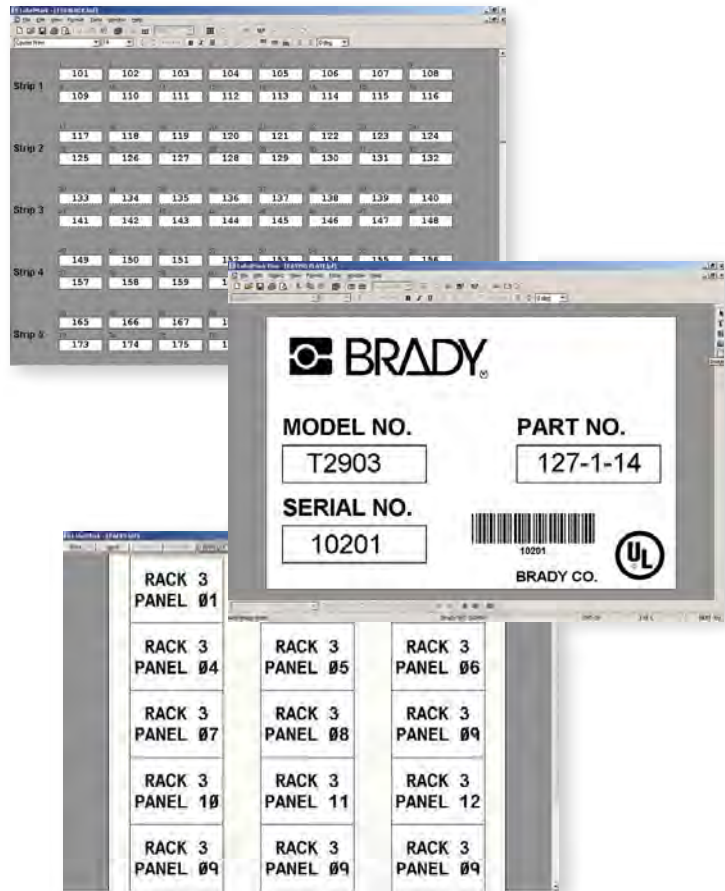
LabelMark™ V3 Labeling Software

► PRIMARY APPLICATIONS

- Wire and cable marking
- Terminal block marking
- Control panel and component marking
- Rating plate Identification
- Quality assurance labeling
- Voice and data equipment labeling
- Asset Identification
- 110 block marking
- Patch panel identification
- Conduit and voltage marking
- Cable tray identification
- Warehouse bin and shelf labeling
- Inventory control

► SYSTEM REQUIREMENTS

- Intel Pentium processor (minimum 66 MHz 486DX2)
- Windows® 98/2000/NT/XP
- Microsoft Internet Explorer 5.01
- 64 MB of RAM (minimum 16 MB)
- Hard Drive with at least 100 MB of free disk space
- CD-ROM Drive
- 16-bit or greater video display card
- 800 x 600 or greater monitor resolution



LabelMark™ Feature

LabelMark™ Feature	LabelMark™ LABELING SOFTWARE	LabelMark™ plus! LABELING SOFTWARE
Simple Fixed Line Entry Mode	●	
Free-form label design		●
Multi-Label Display	●	●
Multi-Label Editing	●	●
Auto legend repeat (Wire marker Mode)	●	●
Serialization	●	●
Date/Time Stamp	●	●
ASCII, ODBC and OLE DB Import	●	●
Text block creation		●
Bar codes		●
Graphic Images		●
Lines and rectangles		●
Symbol Library		●

BOTH design applications included in every installation!

IdentiLab™ Laboratory Labeling Software

IDENTILAB LABORATORY LABELING SOFTWARE SOFTWARE, SERVICES AND DATA COLLECTION



Part Number	Description
IDL	IdentiLab Version 1.0

► **COMPATIBLE BRADY SYSTEMS WITH IDENTILAB™ LABORATORY LABELING SOFTWARE**



MVP Series



X-Plus Series



1244/1344 Series



TLS PC Link™
Thermal Labeling System



TLS 2200®
Thermal Labeling System



IDXPERT™
Handheld Labeler

IMAGINE Legible, Professional Labels for Your Lab Samples in Just Minutes!

Create files, templates and more with the easy-to-use wizards in Brady's IdentiLab Laboratory Labeling Software.

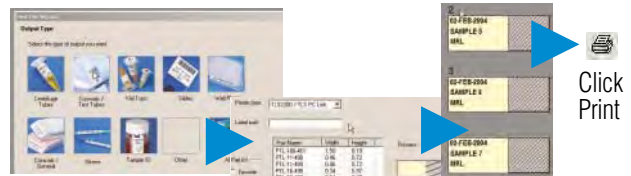
The streamlined interface and hundreds of parts and graphics categorized by common lab applications makes creating legible, durable and accurate labels quick and easy.

- Easy-to-use wizards to create new files and templates
- Superscript and subscript characters
- Database import capabilities with refresh feature to ensure data integrity
- Automatic text formatting
- 2-D bar code support
- Multi-label data entry view
- Die cut and continuous label supplies
- Compatibility with a variety of Brady printers including LABXPERT™ Laboratory Labeling System, TLS 2200® Thermal Labeling System, TLS PC Link™ Thermal Labeling System, all Bradyprinter™ models, and all Windows-based printers.

► **SYSTEM REQUIREMENTS**

- Intel Pentium® processor
- Operating System
Windows® 98
Windows® 2000 with Service Pack 1
Windows® NT with Service Pack 6a
Windows® XP
- Microsoft Internet Explorer 5.01
- 64 MB of RAM (minimum 16 MB of RAM)
- 100 MB of available hard-disk space
- 16-bit or greater video display card
- 800 x 600 or greater monitor resolution
- CD-ROM Drive

► **PRINT YOUR LABELS IN THREE SIMPLE STEPS**



Step 1: Choose a category of label type to fit your Lab Application.

Step 2: Select your printer and the label part you have installed.

Step 3: Type your label text onto label preview to see your whole print job on screen!

Surf on Signs™ Signs and Labels Database



Part Number	Description
98200	Surf on Signs CD



With Surf on Signs CD, thousands of pre-made signs and labels are just a click away!

Need custom? No problem.

- ▶ Surf on Signs legends can be edited by you
- ▶ Custom legends you can create can be saved
- ▶ Follow the step-by-step directions
- ▶ Click and print

¿Habla español? ¡Si! ¡Si!

- ▶ All legends ready-to-print in Spanish*
- ▶ Also available in bi-lingual format

Parlez-vous Français? Oui! Oui!

- ▶ All legends ready-to-print in French*
- ▶ Also available in bi-lingual format

** Please note that the Surf-on-Signs CD does not feature translation software and will not translate custom legends; all French and Spanish legends are provided by Brady.*

Fast. Accurate. Amazing!

- ▶ Signs, labels, tags, pipe markers
- ▶ Thousands of stock legends
- ▶ High-speed search gives you instant access
- ▶ Ready-to-print format is error-free, hassle-free
- ▶ Just click and print

Step-by-Step Simplicity

- ▶ Connect your computer with your Brady printer
- ▶ Pop Surf-on-Signs CD into your computer drive
- ▶ Follow the step-by-step directions
- ▶ Just click and print

All in the format you need

- ▶ OSHA and ANSI format signs and tags
- ▶ ANSI-ASME pipe markers
- ▶ And more—all ready to print

▶ CUSTOMIZE A TEMPLATE TO FIT YOUR EXACT NEEDS

- ▶ Simply print error-free signs, labels, pipe markers and tags using Surf on Signs
- ▶ Edit feature allows you to personalize and save the customized legend and have it available for future use
- ▶ Translate feature allows you to print messages in English, French, Spanish or bi-lingual formats

▶ COMPATIBLE BRADY SYSTEMS WITH SURF ON SIGNS™ SIGNS AND LABELS DATABASE



GlobalMark™
Industrial Label Maker



PowerMark®
Sign and Label Maker



HandiMark®
Portable Label Maker



Labelizer® PLUS*
Industrial Labeling System



Versa Printer™**
Label and Sign Maker

**Machines no longer available.*

▶ SYSTEM REQUIREMENTS

- ▶ Pentium Processor
- ▶ Windows® 98 with Internet Explorer 5.01
- ▶ Windows® 2000 with Service Pack 1
- ▶ Windows® NT with Service Pack 6a
- ▶ Windows® XP
- ▶ 64 MB RAM
- ▶ 50 MB available hard disk space
- ▶ 16-bit or greater video card
- ▶ 800 x 600 or greater monitor resolution
- ▶ CD-ROM drive

Lockout PRO™ Graphical Procedure Writing Software

LOCKOUT PRO SOFTWARE SOFTWARE, SERVICES AND DATA COLLECTION



- ▶ The use of easy-to-follow procedures helps to prevent mistakes and makes lockout tasks more efficient, reducing downtime
- ▶ Lockout PRO's intuitive user interface speeds you through the process of creating OSHA-compliant lockout procedures, tags and energy source labels
- ▶ Allows you to insert digital photos so employees can locate the correct control points quickly
- ▶ Standardized formats promote easy understanding and consistent use of prescribed safe work practices
- ▶ Also includes complete user-editable energy control policy and employee training tools

▶ ADDITIONAL FEATURES

- ▶ Display the user interface and create procedures in English, Spanish, French or Portugese
- ▶ Export procedures for use with CMMS and ERP systems
- ▶ Includes employee training tools and editable corporate LO/TO policy
- ▶ Automatically generate tags and labels for each energy source

▶ HIGHLIGHTED FEATURES

- A** Customize text fields to fit your needs
- B** Input digital photos and identify control points
- C** Customize icons and colors as desired
- D** Use predefined instructions or type in your own text

Part Number	Description
65918	Lockout PRO software
58981	Lockout PRO, BLS850 laminator ¹
90843	Lockout PRO, D-560 digital camera ²
58982	Lockout PRO, laminator and camera
58977	Lockout PRO Viewer ³
58978	Lockout PRO for Pocket PC

¹ Small, lightweight laminator works without electricity, heat or messy chemicals. Accommodates single or double-sided lamination of documents up to 8 inches wide.
² Compact Olympus® digital camera featuring a 3.2-megapixel CCD and 3x optical/10x seamless digital zoom lens.
³ Allows users to view and print Lockout Pro procedures, tags and labels, but not create or edit the procedures.
⁴ Data collection utility that allows procedures to be created on a handheld device running Microsoft's Pocket PC operating system. Used in conjunction with Lockout PRO or Lockout PRO Enterprise.

▶ SYSTEM REQUIREMENTS

- ▶ Windows NT4.0, 98se, ME, 2000 and XP operating systems
- ▶ Microsoft Internet Explorer 5.01 or higher
- ▶ Processor: 486 / 66 MHz (Pentium recommended)
- ▶ Disk space: 90 MB
- ▶ Screen resolution: 800 x 600 minimum (1024 x 768 preferred)

Lockout PRO™ Graphical Procedure Writing Software

▶ LOCKOUT PRO OUTPUT OPTIONS

- ▶ Print procedures to plain paper using conventional inkjet/laser printers.
- ▶ For greater durability, print procedures, tags and energy source labels using Brady's GlobalMark™ Industrial Labeling System. Energy source labels can also be printed to Brady's HandiMark® Portable Label Maker.



Lockout PRO™ Enterprise

- ▶ Lockout PRO™ software for use on a server-based network
- ▶ Supports multi-user collaborative procedure management
- ▶ Allows employees to view and print procedures from a web browser
- ▶ Has built-in lockout activity tracking feature
- ▶ Provides online training and tracks trainees' results
- ▶ Allows users to save and access lockout procedures created in other programs
- ▶ Procedures can be created offline for automatic uploading when connected to the network

Part Number	Description
58975	Basic License
58979	Additional administrator (adds 1 administrator to Basic License)
65919	Server License
58976	Corporate License

▶ ENTERPRISE LICENSE OPTIONS

- ▶ **Basic license:** Installs on a single server. Limited to 3 administrators who can create and edit procedures. Anyone with access to the server can view and print procedures.
- ▶ **Server license:** Installs on a single server. Unlimited administrators. Anyone with access to the server can view and print procedures.
- ▶ **Corporate license:** Installs on multiple servers. Unlimited administrators. Anyone with access to the server can view and print procedures.

▶ COMPATIBLE BRADY SYSTEMS WITH LOCKOUT PRO™ GRAPHICAL PROCEDURE WRITING SOFTWARE



GlobalMark™
Industrial Label Maker






HandiMark®
Portable Label Maker

Selecting Your Tracking Software

FacilityManager	Fireproof XT	Inspection Manager FLX
		
<p>FacilityManager is a paperless computerized maintenance management system (CMMS) software application that controls maintenance management operations. FacilityManager schedules routine inspections, schedules detailed work orders for preventive maintenance tasks, and performs unscheduled maintenance in the field.</p>	<p>FireProof is a software management tool that tracks the inspection and maintenance activities for fire extinguishers, fire hoses, ladders, SCBAs, sprinkler systems, eyewash stations and showers, emergency exits, safety signs and more. FireProof streamlines equipment tracking by eliminating log sheets and manual data entry.</p>	<p>Inspection Manager FLX was created specifically for Fire Departments that are overwhelmed by the data entry and record management associated with mandatory building inspections. The system streamlines time management and offers a simplified solution for helping fire houses fulfill their overall critical goal of fire prevention.</p>
Page 214	Page 214	Page 214

GENERAL	FacilityManager	Fireproof XT	Inspection Manager FLX
Schedules, Tracks, and Documents Inspection and Maintenance Activities	X	X	
Documents Building and Fire Code Inspections	X		
Generates Work Orders on the PC	X	X	
Generates Work Orders / Tasks / Violations on the Handheld	X		X
Documents Violations			X
Track Horizontal, Backbone Cabling, Termination Hardware, Fire Stopping, Pathways, and Cable Splices			
Track Assets			
Customizable Fields	X	X	X
General Security (Password Protection)			X
Advanced Security (User Level Security)	X		
Type of Solution	Enterprise	Enterprise	Enterprise
Web-Enabled User Interface			
COMMON APPLICATIONS	FacilityManager	Fireproof XT	Inspection Manager FLX
PM Inspections, Including HVAC Equipment, Boilers, Chillers, Ovens	X		
Regulatory Inspections Including Fire Extinguishers and Life Safety Equipment (Eye Wash Stations, Hoses, Sprinklers, etc.)	X	X	
Manage Cabling, Network, Telephony, and Legacy Connections			
Manage High Dollar Assets, Locations of those Assets, and Cost			
Regulatory Medical Equipment Inspections Including Heart Monitors, Blood Warmers, etc.			
Manage Both Consumable Items and Rotating Stocks of Tools and Equipment			
Regulatory inspections on building on fire codes	X		X
Easily Manage a Stockroom of Consumable Items, Automatically Generate Stocking Reports, Cycle Count Product, etc..			
Petrochemical Inspections Including Valve Pressure Readings, pH Equipment, Calibrations	X		
General Inspections	X		
PRINTERS AND PRINTING	FacilityManager	Fireproof XT	Inspection Manager FLX
Internal Print Engine	X	X	X
Internal Label Creation Engine			
Internal Report Creation Engine	X	X	X
Support for Integration to LabelMark™			
TLS 2200® Periphial Printing (page 16)			
Standard Windows Print Drivers (Including BRADY Benchtop THT's)	X	X	X
GlobalMark™ Periphial Printing (page 75)			
PowerMark® Periphial Printing			
HandiMark® Periphial Printing (page 50)			
TLS PC Link™ Periphial Printing (page 16)			

Selecting Your Tracking Software

	 MEDI-MIZER MEDI-MIZER is a biomedical software management tool that provides a systematic, managerial approach to quality control and risk management. It effectively tracks Biomedical departments in hospitals worldwide, ranging in size from small community facilities to large universities and multi-health systems.	 Asset Track Asset Track is designed to track and manage assets such as computers, machinery, furniture, equipment, vehicles and more. Asset Track traces the receiving, storing and transfer of any type item. The system provides information on asset quantities and location of the asset within the building.	 Inventory Track Inventory Track is designed to record the movement of any type of inventory in a warehouse or stockroom. The system is used to track the receiving, storing and transferring of inventory items. Inventory Track provides information on inventory levels and the exact location of the inventory.	 Tool Track Tool Crib Managers use Tool Track to record movement of any type of tools or supplies in and out of a tool room. The system tracks the receiving, transfer, location and check-in/check-out of tools. Tool Track increases the accuracy of tool and supply inventory, eliminating the expense of replacing missing tools.	 NetDoc™ NetDoc is a network documentation and cable management software package that provides you with tools to manage, document and label your physical network. NetDoc allows you to document horizontal and backbone cables, assets, termination hardware, contacts, pathways, locations and more.
	Page 214	Page 215	Page 215	Page 215	Page 216
	X				
	X				
	X				
					X
		X			X
X	X	X	X	X	X
X	X	X	X	X	X
Departmental	Departmental	Departmental	Departmental	Departmental	Enterprise
					X
		X			X
X				X	
			X		
X	X	X	X	X	X
X	X	X	X	X	X
X	X	X	X	X	X
					X

FacilityManager



FacilityManager is a paperless computerized maintenance management system designed to generate work orders and streamline preventive maintenance inspections using Palm Pilots® or Pocket PCs. FacilityManager plans, schedules and tracks maintenance management activities, ultimately reducing equipment down time and maximizing productivity. The system generates scheduled and unscheduled work orders from the field and generates routine preventive maintenance inspection routes. FacilityManager assists in proving compliance with OSHA, NFPA, JCAHO and other regulatory agencies.

Part Number	Description
98870	FacilityManager standard software
65164	SPT1800 palm hand-held device
65165	Single-slot device cradle with line cord and power supply

Part Number	Description
65172	Form-fitted holster
65174	SPT1800 spare battery

MEDI-MIZER™



MEDI-MIZER is a hand-held, mobile software solution that automates the tracking and inspecting of biomedical equipment. The system allows biomedical technicians to effectively and accurately monitor safety, performance, and preventative maintenance inspections. MEDI-MIZER combines the most innovative application tools with the latest in Palm Pilot® technology to offer an immense range of capabilities including outside service modules, field set-up options, extended reporting features and additional inspection functions. The system also assists in proving compliance with JCAHO and other internal or external regulatory agencies.

Part Number	Description
59586	MEDI-MIZER single-user software
59592	MobileTech for MEDI-MIZER device package, including SPT1550 palm hand-held device and cradle

FireProof™ XT



Using software and hand-held computers, FireProof XT streamlines the tracking and inspections of fire extinguishers, sprinkler systems, HVAC equipment, eye wash stations, SCBAs, back-up generators and more. Items requiring inspection are electronically transferred from a PC to the hand-held computer. The hand-held computer directs the inspector only to the equipment in need of inspection and prompts him through the tasks required to complete the inspection. FireProof XT ensures that no piece of equipment will ever be missed or forgotten. At the end of the shift, the collected data is transferred from the hand-held device to the PC, automatically updating records and creating historical files. The system ensures compliance with OSHA, NFPA, JCAHO and other internal or external regulatory agencies.

Part Number	Description
65477	FireProof XT standard software
65164	SPT1800 palm hand-held device
65165	Single-slot device cradle with line cord and power supply

Part Number	Description
65172	Form-fitted holster
65174	SPT1800 spare battery

Inspection Manager FLX



Spend less time manually recording NFPA violations and inputting data and more time completing building inspections. Inspection Manager FLX combines powerful software with the latest in Palm computing to completely automate annual building inspections. The system allows users to record violations electronically with a PDA, eliminating handwritten paperwork and time-consuming data entry. Inspection Manager FLX quickly and easily documents all building inspection activities, increasing productivity and efficiency in the field.

Part Number	Description
62960	Inspection Manager Standard - 1 user

Asset Track



Part Number	Description
59974	Asset Track software package includes: single-user software license, hand-held computer and transmitter, 50 pre-printed bar code labels, 1 year of hardware and software support and 2 hours of web-based training

Asset Track is a computerized system designed to track and manage assets. Software, hand-held computers and bar codes are used to track the receiving, storing, and transfer of any type of items. Asset Track provides information on asset quantities and location of the assets within the building. Asset Track eliminates manual paper tracking processes, while improving accuracy and productivity.

▶ **ASSET TRACK MANAGES**

- ▶ Computers and Related Equipment
- ▶ Machinery
- ▶ Furniture
- ▶ Equipment
- ▶ Vehicles
- ▶ And More!

▶ **FEATURES**

- ▶ Tracks last maintenance performed on assets
- ▶ Tracks all assets in stock for ease in reordering
- ▶ Provides instant information on asset location
- ▶ Provides a variety of reports listing all information about individual asset transactions
- ▶ Provides a user-friendly application making it easy to add and search for records
- ▶ Provides Security passwords allowing only authorized access to the database
- ▶ Provides the ability to sort data by key fields

Inventory Track



Part Number	Description
59975	Inventory Track software package includes: single-user software license, hand-held computer and transmitter, 50 pre-printed bar code labels, 1 year of hardware and software support and 2 hours of web-based training

Inventory Track is a computerized system used to record the movement of any type of inventory in a warehouse or stockroom. Software, hand-held computers and bar codes are used to track the issuing, restocking, and moving of inventory items. Inventory Track provides information on inventory levels and the location of the inventory. Inventory Track eliminates manual paper tracking processes, while improving accuracy and productivity.

▶ **INVENTORY TRACK MANAGES**

- ▶ Parts
- ▶ Supplies
- ▶ Consumables
- ▶ Raw Materials
- ▶ And More!

▶ **FEATURES**

- ▶ Tracks all inventory in stock for ease in reordering
- ▶ Provides a report listing all information about individual inventory transactions
- ▶ Provides audit trails tracking the complete activity history of an item
- ▶ Provides a user-friendly application making it easy to add and search for records
- ▶ Provides Security passwords allowing only authorized access to the database
- ▶ Provides the ability to sort data by key fields

Tool Track



Part Number	Description
59995	Tool Track software package includes: single-user software license, hand-held computer and transmitter, 50 pre-printed bar code labels, 1 year of hardware and software support and 2 hours of web-based training

Tool Track is a computerized system used to record the movement of any type of tools or supplies in and out of a tool room. Tool Crib Managers use software, hand-held computers and bar codes to track the receiving, movement, location and check-in/check-out tools. Tool Track improves accuracy in managing tool inventory and eliminates the expense of replacing lost tools.

▶ **TOOL TRACK**

- ▶ Time and date stamps each transaction
- ▶ Identifies the individual using the tool
- ▶ Tracks supply quantities

▶ **FEATURES**

- ▶ Tracks last maintenance performed on tools
- ▶ Tracks all tools and supplies in stock for ease in reordering
- ▶ Provides a variety of reports listing all information about individual tool transactions
- ▶ Provides a user-friendly application making it easy to add, log and search for records
- ▶ Provides Security passwords allowing only authorized access to the database
- ▶ Provides the ability to sort data by key fields

NetDoc™ Network Documentation and Cable Management Software



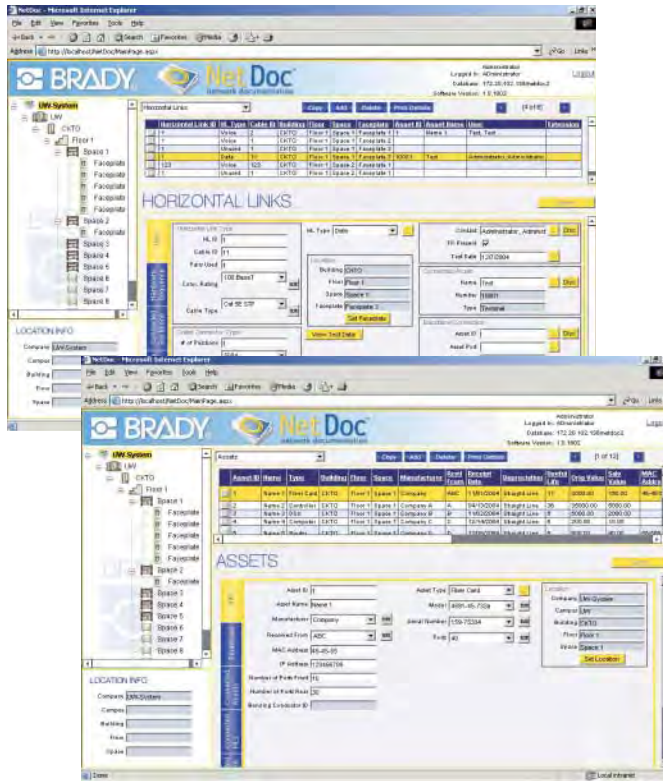
Managing your physical network just got easier.

NetDoc is a network documentation and cable management software package that provides you with tools to manage, document and label your physical network. NetDoc allows you to document horizontal and backbone cables, assets, termination hardware, contacts, pathways, locations, and more.

NetDoc is a web-enabled solution that provides complete ANSI/TIA/EIA606-A documentation and labeling compliance. NetDoc's seamless integration with Brady's Labelmark label design software gives you a complete documentation and labeling solution to help increase productivity, reduce costs, and improve user services.

► BENEFITS

- Save time locating and correcting network issues
- Reduce network downtime and provide better internal support
- More efficient use of internal and external resources
- Better planning for new projects, future growth, changes, and additions
- Save time spent on physical audits
- Simplify the management of the physical network
- Seamless integration with Labelmark eliminates the need to manually reenter data to generate labels.
- Save time building your CMS database by using NetDoc's Excel import tool, wizards, and copy features
- Generate detailed reports



Part Number	Description
ND-1User	NetDoc Single User License Package
ND-5User	NetDoc 5 User License Package

NETDOC SOFTWARE SOFTWARE, SERVICES AND DATA COLLECTION

NetDoc™ Network Documentation and Cable Management Software



APPLICATION FEATURES

- ▶ Web-enabled solution
- ▶ Log-in security
- ▶ Full ANSI/TIA/EAI 606A compliance
- ▶ Documentation wizards
- ▶ Seamless link with LabelMark™ software
- ▶ Spreadsheet import tool
- ▶ Multi-view and multi-task capability
- ▶ Import data from testers
- ▶ User and date stamping on all notes
- ▶ Customize fields
- ▶ Attachment capabilities
- ▶ Track horizontal and backbone cabling, termination hardware, assets, contacts, fire stopping, pathways, cable splices, and more

DETAIL VIEWS

BACKBONE CABLES

Cable ID	Plant/Assembly	Source Identification	Source Port	Destination Identification	Destination Port	Color 1	Color 2	Notes
Cable 1	1	1000R001	1	1000R001A	1			
Cable 2	2	1000R002	2	1000R002A	2			
Cable 3	3	1000R003	3	1000R003A	3			
Cable 4	4	1000R004	4	1000R004A	4			
Cable 5	5	1000R005	5	1000R005A	5			
Cable 6	6	1000R006	6	1000R006A	6			
Cable 7	7	1000R007	7	1000R007A	7			
Cable 8	8	1000R008	8	1000R008A	8			
Cable 9	9	1000R009	9	1000R009A	9			
Cable 10	10	1000R010	10	1000R010A	10			

View source and destination for each strand of your backbone cable.

TERMINATION HARDWARE

Part/Port	Cable Type	Cable ID	Backbone Pair/Strands	Status	Notes
1	Horizontal Link	AD1	1	Used	
2	Horizontal Link	AD2	2	Used	
3	Horizontal Link	AD3	3	Used	
4	Horizontal Link	AD4	4	Used	
5	Horizontal Link	AD5	5	Used	
6	Horizontal Link	AD6	6	Used	
7	Horizontal Link	AD7	7	Used	
8	Horizontal Link	AD8	8	Used	
9	Horizontal Link	AD9	9	Used	
10	Horizontal Link	AD10	10	Used	
11	Horizontal Link	AD11	11	Used	
12	Horizontal Link	AD12	12	Used	

View the ports and connections to all your termination hardware.



LabelMark™ V3 Labeling Software is included in NetDoc.

The image shows a wizard interface for creating assets. It includes fields for 'Company', 'Device', 'Building', 'Floor', and 'Device'. There are buttons for 'Get Location', 'Get Legend', 'Preview', 'OK', 'Cancel', and 'Go Back'. Below the main form, there are sections for 'Default Settings' and 'Color / Connector Type'.





NetDoc features wizards that assist in creating multiple copies of items containing the same default information. Create thousands of assets, horizontal and backbone cables, and hardware at the same time.

The image shows a filter and field selection interface. It has five sections: 1. Filter by Object (Filter by Object: none, Filter by Type: all), 2. Filter by Location (Company, Device, Building, Floor, Get Legend), 3. Filter by Space (Space Type: all, Select Space), 4. Preview (Total: 0, Preview), 5. Select Fields (Company, Device, Building, Floor, Space, Select).

Transfer identifier information seamlessly to Labelmark Label Design Software to generate your labels.

Selecting Your Tracking / Automation Hardware

SELECTING YOUR TRACKING / AUTOMATION HARDWARE SOFTWARE, SERVICES AND DATA COLLECTION

	BCL	Powerscan	Code Reader 1	Code Reader 2
	<p>The Bar Code Laser (BCL) scanner offers great performance at a very affordable price. With a high first pass read rate and the best speed-to-read of any scanner in its class, the BCL Scanner speeds data entry and it's 33 cm / 13" depth-of-field with standard UPC labels extends the user's working range.</p>			
	<p>Page 219</p>	<p>Page 219</p>	<p>Page 219</p>	<p>Page 220</p>

FEATURES	BCL	Powerscan	Code Reader 1	Code Reader 2
Standard Linear Bar Code Support (Code 39, Code 128, etc.)	X	X		X
2D Bar Code Support 9 (Datamatrix, PDF417, QR CODE, etc..)			X	X
Min. Bar Code Size (Mill Width)	5 Mil	7 Mil / *3 Mil	7 Mil	3 Mil Linear 5 Mil 2D
OS Compatibility	Windows® / Mac	Windows / Mac	Windows	Windows
PDA Support (Pocket PC Devices)				Bluetooth enabled PDA's ONLY
Resistance to Windblown Rain and Dust (Certified to IP54 standards)		X		
External Triggering (I.e: Trigger from PLC or Industrial PC)				X
Support for Basic Data Control (Adding CR, LF, TAB, before or after scan)	X	X	X	X
Support for Advanced Data Control (Data Parsing, Logic Equations, etc.)				X
Bar Code Grading Capability				1 - 100 Readability Grade
Field Upgradeable				X
Cordless Options		X		X
Interface Options	PS/2 Wedge (Default) USB	PS/2 Wedge (Default) USB Serial	PS/2 Wedge (Default) Serial	USB (default) PS/2 Serial
Common Accessories	Stand	Battery (for cordless)	None	Stand, Battery (for cordless)
Applications / Special Properties	Entry level scanner best used for basic data entry, inventory, commercial applications	Industrial class scanner best used for shipping, receiving and WIP applications in harsh environments	Electronics, lab, small identification applications, very small, lightweight reader, not meant for harsh environments	Developed to fit into almost any application, electronics, lab, WIP, shipping, receiving, UID initiatives, basic data entry, etc.

* high density unit only



► **BAR CODE LASER (BCL)**

Part Number	Description
BCL-STARTER-KIT	Scanner and keyboard (PS/2) wedge cable
BCL-SCANNER-STAND	Accessory; hands free stand
BCL-USB-CABLE	Accessory; USB cable

- Easy to use
- Quick and easy install
- High first pass read rate and the best speed-to-read of any scanner in its class
- Reads bar codes up to 2 feet away
- Works with existing software (BradySoft™, LabelMark™, MarkWare™, etc.)
- Lightweight and ergonomic for maximum comfort and productivity
- Built to stand up to abuse
- Use the laser in hands-free mode to automate your process (accessory stand required)



► **POWERSCAN™ RF (CORDLESS)**

Part Number	Description
PSCRF-SD-SCANNER	Scanner, PS-2 wedge capable, battery
PSCRF-HD-SCANNER	Scanner, PS-2 wedge capable, battery
PSCRF-232-PS2-BASE	PS-2 / RS-232 capable base station
PSCRF-BATTERY	Battery pack only
PSCRF-BASE-PS2-CBL	PS-2 wedge cable

► **POWERSCAN™**

Part Number	Description
PWSC-SD-PS2-KIT	Standard range, PS/2 keyboard wedge
PWSC-SD-USB-KIT	Standard range, USB keyboard wedge
PWSC-HD-USB-KIT	High density, USB keyboard wedge

- Industrial class rugged scanner
- Cordless scanner option for ease of use
- Works with existing software (BradySoft™, LabelMark™, MarkWare™, etc.)
- Base station able to support multiple scanners
- 150 foot range
- High density, long range and extra long range units available
- Sealed to IP54 standards, able to withstand windblown rain and dust
- Built to stand up to abuse



► **CODE READER 1**

Part Number	Description
CRHD300-PS2	High Density Scanner w/ integrated wedge cable
CRHD300-RS232	High Density Scanner w/ integrated RS-232 cable
CRHD300-PCMCIA	High Density Scanner w/ integrated PCMCIA Card

- Lightweight and compact
- Perfect for Electronics and Lab Markets, or anywhere that compact size is critical
- Works with existing software (BradySoft™, LabelMark™, MarkWare™, etc.)
- Able to read ultra high density 2D bar codes
- All in one design, no possibility for losing parts
- Unique, ergonomic design

Code Reader 2.0 (CR2) Scanner



With its unique dual path optical system, 1.3 million pixel CMOS sensor –the same optical power used in digital cameras – and the industry's most powerful 400MHz processor by AMD, the Code Reader 2.0 platform offers a system that supports:

- ▶ The ability to read both low density/large and high density/small linear and 2D bar code
- ▶ An open system platform to easily add the latest bar code standard or symbology electronically, avoiding the need to upgrade or replace hardware
- ▶ High-speed, multi-directional decoding to capture data from virtually any angle or position
- ▶ One platform with multiple configurations including Cabled, Batch or Cordless
- ▶ An investment that will meet growth and changing needs through a variety of accessories to allow for application-specific configuration changes

Installing the Code Reader is as easy. Simply insert the plug-and-play interface into any Windows based PC and it's ready to capture data. The data will populate fields in any active application. Products of this type will easily work in conjunction with existing peripherals (such as keyboard and mouse). Code Reader is compatible with the following BRADY software: BradySoft, LabelMark, TISCOR Asset Tracking, SAP and more.

Part Number	Description
CR2-USB-HAND-KIT	Basic unit in hand format with USB cable
CR2-PS2-HAND-KIT	Basic unit in hand format with PS2 cable
CR2-USB-GUN-KIT	Basic unit in gun format with USB cable
CR2-PS2-GUN-KIT	Basic unit in gun format with PS2 cable
CR2-STORE-GUN-KIT	Basic unit in gun format with battery and USB cable
CR2-CORDLESS-KIT1	Cordless bundle - cordless unit in gun format with Bluetooth PS/2 wedge receiver



Hand Format



Gun Format

▶ ACCESSORIES

Part Number	Description
CR2-BATCHRGE-US	Charger
CR2-BATTERY1	Spare battery
CR2-RS232-PWR-KIT	RS-232 cable
CR2-BTMODEM-PS2KIT	Bluetooth receiver
CR2-GUN-HANDLE	Detachable handle



Code Reader 2.0 in Hand Format

Code Reader 2.0 (CR2) Scanner

▶ AVAILABLE CONFIGURATIONS

Code Reader 2.0 comes in three different configurations, giving you more choices and options to meet your scanning needs.

Cabled (Basic)

Plug-and-play interface. Available with USB (standard), PS2 or RS232 interfaces. All cables use rugged automatic locking adapters that allow users to change cables while preventing inadvertent disconnections.

Batch (Basic + Battery)

Cabled and Store and Forward capability in one unit. Simply detach scanner from computer, capture data remotely and reconnect to computer. When reconnected, the scanner will automatically download data to the active application. Features 1300 milliamp lithium-ion battery with 4000-scan lifespan, plus 8 hours of standby time. When connected via the included USB cable, the unit operates as a standard keyboard wedge.

Cordless (Basic + Internal Radio)

Cabled, Batch and Cordless capability configured in this unit. Incorporates class 1 Bluetooth radio with 300' operating range to communicate seamlessly with desktop PCs, laptops, printers and PDAs. When operating in a cordless configuration, the battery life reduces to a 3000-scan lifespan. Coupled with our Bluetooth Wedge Modem, the Code Reader will send live data back to an active application.

▶ COMMON APPLICATIONS

Ensure compliance by randomly checking that your bar codes read after application to the finished product. The Batch configuration is typically recommended for this type of application.

Verify the quality of a printed bar code to score/grade the image.

The Code Reader is able to score and bar code to determine readability from 1/worst to 10/best, with the score identified following the data.

Automate an existing process such as WIP, MRP, ERP, LIMS, Inventory Management or Label Creation.

For a general automation project, the Cabled or Cordless configuration is recommended based on preference.

▶ THE CODE READER 2.0 ADVANTAGE

- ▶ Three different configurations to choose from
- ▶ Unique dual-path optical system
- ▶ High resolution imager
- ▶ Field upgradeable

▶ HARDWARE CHARACTERISTICS

Interface Type	USB (standard), RS-232, PS2, Bluetooth Class 1 Radio
Rotational Tolerance	180°
Target Beam	Class 2 Visible Laser Diode at 630nm
Ambient Light	Total darkness to 96,800 lux (full strength)
Shock	Withstands multiple drops of 6.56 feet (2 meters) to concrete
Decode Capabilities	MaxiCode, PDF417, Datamatrix, QR Code, MicroPDF417, GoCode, UCC Composite, Aztec Code, Code 39, Code 128, UPC/EAN/JAN, I2of5, Codabar, Code 93, UCC RSS, POSTNET, PLANET, Japanese Post, Australia Post, Royal Mail RM4SCC, KIX code
Field of View	Near: 21.5° horizontal by 16.2° vertical Far: 22.9° horizontal by 11.6° vertical
Focal Point	Near: 21.5° horizontal by 16.2° vertical Far: 22.9° horizontal by 11.6° vertical
Optical resolution	Near: 1024 x 640 Far: 1024 x 640
Additional Capabilities	Vibration on Good Read
Read Range	Min: 5 Mil Datamatrix / 3 Mil UPC Max: 20 Mil Datamatrix / 12 Mil UPC

Intelligently scan one bar code out of many on a heavily populated form or label.

All versions of the Code Reader include advanced capabilities to easily discriminate by bar code type or data within a specific bar code.

Manipulate data prior to passing to host application, including truncate, append, add tabs and returns, etc.

With the Code Reader, common control characters can be added by scanning a few simple codes. Advanced scripting language may be needed for complex data manipulation.

